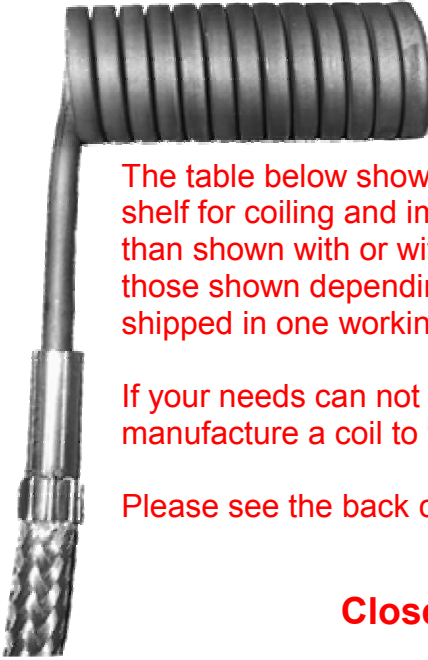


STANDARD VIPER COIL SIZES



The table below shows the standard lengths and wattages that are available off the shelf for coiling and immediate delivery. Heaters can be coiled to lengths greater than shown with or without wattage profiling. Lengths can be much longer than those shown depending on coil spacing. Heaters can normally be coiled and shipped in one working day.

If your needs can not be met by one of these heaters, we will be happy to custom manufacture a coil to your specifications.

Please see the back cover for precoiled heaters to replace standard OEM models.

Closed Coil Lengths vs. Coil Diameter

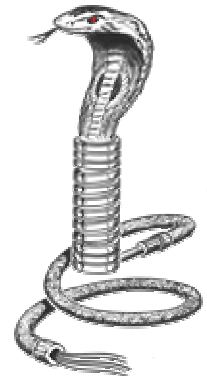
Straight Length	Wattages Available		Coil Diameter (ID)						
			1/2	5/8	3/4	7/8	1	1 1/4	1 1/2
14	200	-	0.96	0.82	0.69	0.69	0.55	0.41	0.41
16	250	175	1.10	0.96	0.82	0.69	0.69	0.55	0.41
18	300	225	1.23	1.10	0.96	0.82	0.69	0.55	0.55
20	350	250	1.37	1.10	0.96	0.82	0.82	0.69	0.55
24	400	300	1.64	1.37	1.23	1.10	0.96	0.82	0.69
28	450	350	1.92	1.64	1.37	1.23	1.10	0.96	0.82
32	500	400	2.19	1.78	1.64	1.37	1.23	1.10	0.82
36	600	450	2.47	2.06	1.78	1.51	1.37	1.10	0.96
40	700	500	2.74	2.33	1.92	1.78	1.51	1.23	1.10
48	800	550	3.29	2.74	2.33	2.06	1.92	1.51	1.37
52	900	650	3.56	3.01	2.60	2.33	2.06	1.64	1.37
56	1000	-	3.84	3.29	2.74	2.47	2.19	1.78	1.51
64	1100	-	4.38	3.70	3.15	2.74	2.47	2.06	1.78
72	1250	-	4.93	4.11	3.56	3.15	2.74	2.33	1.92
80	1400	-	5.48	4.66	3.97	3.43	3.15	2.60	2.19

- Coil lengths based on a closed coil. Coils can be stretched for distributed wattage and/or much longer coil lengths.
- Sizes are based on a 1.18" extension length.
- All heaters are 240V.
- All heaters have 36" leads with stainless steel overbraid and a ground wire.
- Heaters are available with and without thermocouple.
- All heaters are .13" x .13" square cross section.

NON STOCK CROSS SECTIONS

The following cross sections are also available for custom manufacture

- .087 x .165 Flat Cross Section
- .095, .118, and .146 Round Cross Section



IN STOCK VIPER COIL HEATERS

Marathon Part No.	OEM Part No.	Coil ID	Coil Length	Extension Length	Lead Orientation	Lead Length	TC	Distributed Wattage	Volts	Watts
CL50-014A	SSTC-62-90	0.500"	1.45	1.25	SPECIAL	36	YES	YES	240	250
CL50-020C	SSTC-72-90	0.500"	2	1	SPECIAL	36	YES	YES	240	250
CL50-025A	SSTC-42	0.500"	2.5	0.95	CL4	40	YES	NO	240	450
CL50-025B	SSTC-42-90	0.500"	2.5	2.12	CL4	40	YES	NO	240	450
CL50-045C	SSTC-32	0.500"	4.5	2.12	CL4	36	YES	YES	240	300
CL50-045D	SSTC-32-90	0.500"	4.5	2.12	CL1	36	YES	YES	240	300
CL50-045E	SST-31	0.500"	4.5	1.125	CL4	48	YES	YES	120	300
CL50-045F	SSTC-31-90	0.500"	4.5	2.12	CL1	48	YES	YES	120	300
CL62-009A	SCH0003	0.625"	0.975	1.65	SPECIAL	42	NO	NO	240	225
CL62-020A	SCH0081	0.625"	2	0.5	CL1	36	YES	YES	240	300
CL62-025A	SCH0082	0.625"	2.5	0.5	CL1	36	YES	YES	240	350
CL62-030A	SCH0083	0.625"	3	0.5	CL1	36	YES	YES	240	400
CL62-035A	SCH0084	0.625"	3.5	0.5	CL1	36	YES	YES	240	425
CL62-040A	SCH0085	0.625"	4	0.5	CL1	36	YES	YES	240	500
CL62-050A	SCH0086	0.625"	5	0.5	CL1	36	YES	YES	240	500
CL62-060A	SCH0087	0.625"	6	0.5	CL1	36	YES	YES	240	550
CL75-014A	SCH0060	0.750"	1.437	0.5	CL1	36	NO	YES	240	250
CL75-017A	SCH314-2	0.750"	1.75	1.87	CL1	45	YES	YES	240	315
CL75-019A	SCH0061	0.750"	1.937	0.5	CL1	36	NO	YES	240	300
CL75-024A	SCH0062	0.750"	2.437	1.87	CL1	36	NO	YES	240	350
CL75-024B	SCH324-2	0.750"	2.437	0.5	CL1	45	YES	YES	240	315
CL75-029A	SCH0063	0.750"	2.937	0.5	CL1	36	NO	YES	240	400
CL75-034A	SCH0064	0.750"	3.437	0.5	CL1	36	NO	YES	240	425
CL75-044A	SCH0065	0.750"	4.437	0.5	CL1	36	NO	YES	240	500
CL75-054A	SCH0066	0.750"	5.437	0.5	CL1	36	NO	YES	240	500
CL87-021A	SCH0088	0.875"	2.125	0.5	CL1	36	YES	YES	240	400
CL87-026A	SCH0089	0.875"	2.625	0.5	CL1	36	YES	YES	240	450
CL87-031A	SCH0090	0.875"	3.125	0.5	CL1	36	YES	YES	240	550
CL87-036A	SCH0091	0.875"	3.625	0.5	CL1	36	YES	YES	240	700
CL87-041A	SCH0092	0.875"	4.125	0.5	CL1	36	YES	YES	240	800
CL87-051A	SCH0093	0.875"	5.125	0.5	CL1	36	YES	YES	240	900
CL87-061A	SCH0094	0.875"	6.125	0.5	CL1	36	YES	YES	240	1000
CL87-071A	SCH0095	0.875"	7.125	0.5	CL1	36	YES	YES	240	1100

All heaters have stainless steel braid lead protection, internal thermocouple where noted, and a ground wire. Heaters are on the shelf and available for immediate shipment.

Marathon Heater
HCR #3 Box 86E
808 Hackberry Ln.
Del Rio, TX 78840

